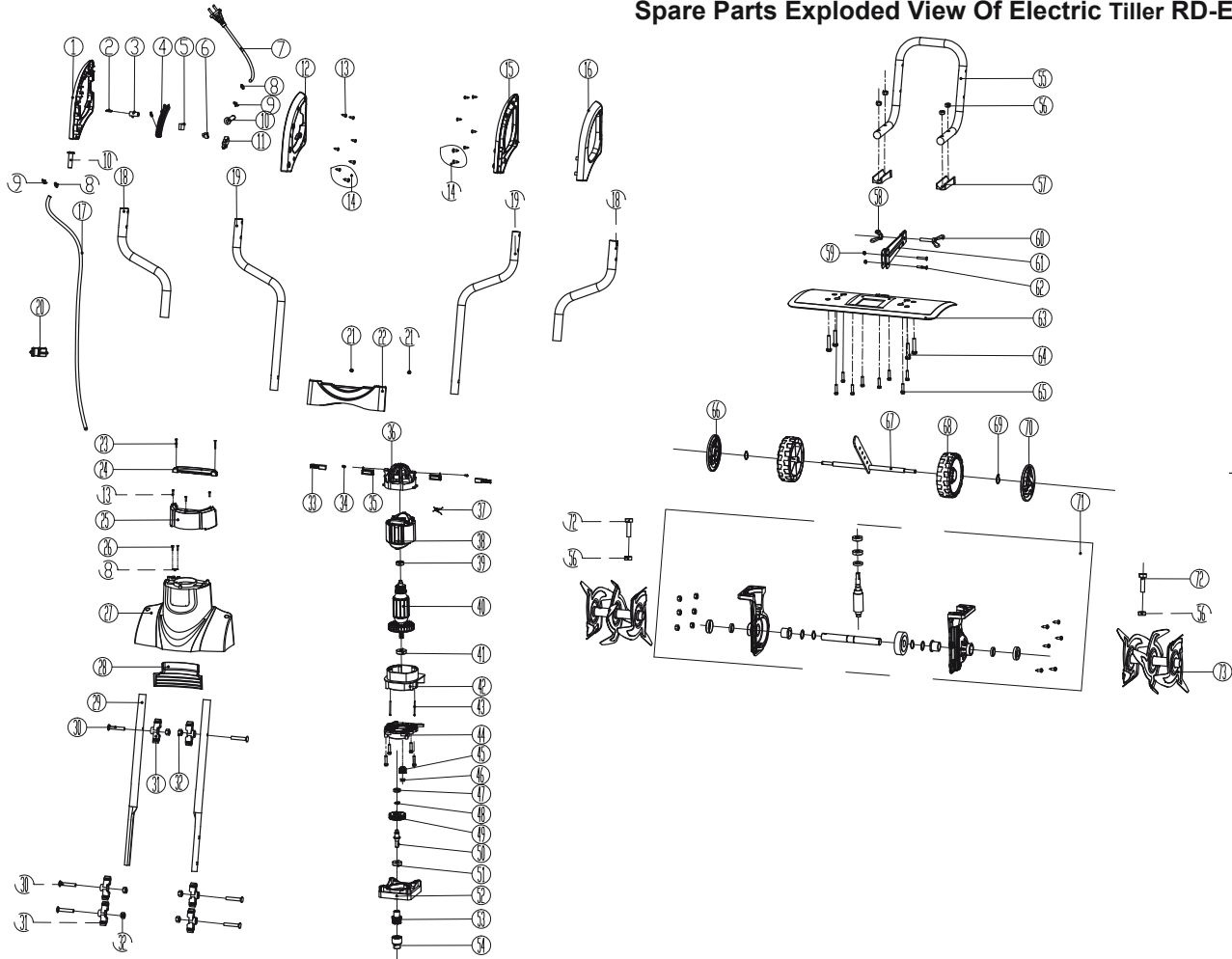


Spare Parts Exploded View Of Electric Tiller RD-ET02



PARTS LIST

1	297-7G60107	RIGHT HANDLE(RIGHT)
2	344-7J11502	spring
3	293-7G60102	anti-locking button
4	296-7G60102	switch trigger
5	141-7G60102	capacitance
6	231-7J30302	binding post
7	171-7G60201	cable with plug
8	220-7A20201	pressing plate
9	131-ABAD40-1203	screw 4*12
10	196-7A21801	cable sheath
11	139-7G60102	switch
12	297-7G60108	right handle (left)
13	131-ABAD40-1603	screw 4*16
14	131-ABAD50-1603	screw 5*16
15	297-7G60105	left handle (left)
16	297-7G60106	left handle (right)
17	172-7G60101	cable
18	258-7G60201	drivepipe
19	254-7G60203	S bend
20	279-7G60101	cable clamp
21	131-ABAD50-1202	screw 5*12
22	225-7G60201	support plate
23	131-ABAD40-7003	screw 4*70
24	297-7G60201	handle
25	388-7G60201	cover
26	131-ABAD40-1003	screw 4*10
27	303-7G60201	housing
28	218-7G60201	Shield
29	254-7G60202	intermedium pole
30	131-SWDD08-5002	bolt M8x50
31	295-7G60101	knob
32	132-B0802	nut M8
33	118-7G60201	carbon brush 7*11*18
35	286-7A20901	brush holder
	131-ABCD30-0802	screw 3*8
36	287-7A20502	motor after-poppet
37	140-7G60102	inductance
38	117-7G60201	stator 1500W
39	369-A00060801	bearing 608
40	115-7G60201	rotor 1500W
41	369-A00600101	bearing 6001
42	287-7G60201	up poppet
43	131-ABCD50-7502	screw ST5*75
44	385-7G60201	middle cover
45	359-7G60202	pinion
46		nut M6
47	369-A00060701	bearing 607
48	130-G1201	circlp 12
49	359-7G60201	big gear
50	334-7G60201	spindle
51	369-A00600001	bearing 6000
52	287-7G60202	down poppet
53	195-7G60201	uper connector
54	195-7G60202	down connector
55	254-7G60201	front bend pipe
56	132-B0802	nut M8
57	246-7G60201	base
58	132-J0801	butterfly nut M8
59		nut M6
59	131-GJDD08-15	butterfly bolt M8x15
60	324-7G60201	connecting rod assembly
	234-7G60201	connecting rod
63	222-7G60202	fender
62		screw M6x25
64	131-FWDD08-4501	screw M8x45
65	131-KCDD06-3001	screw M6x30
66	393-7A10202	right wheel cover
	324-7G60103	board assembly
	216-7G60101	board
67	330-7G60102	axle
68	356-7A10201	wheel
69	130-G0801	circlp 8
70	393-7A10201	left wheel cover
71	208-7G60201	gearbox
72	131-FWDD08-3501	bolt M8x35
73	324-7G60201	tiller blade
		thermoswitch